

Full-size Pattern to Create Such A Dish - Twin Set

From the book - Joy of Fusing Pages 62 to 63

The full-size pattern contained in this PDF will enable you to create the "Such A Dish" hors d'oeuvre plate project, found in the book *Joy of Fusing* by Wardell Publications Inc. Use this pattern and follow the instructions on pages 62 & 63 to complete the project.

Important Note about Printing:

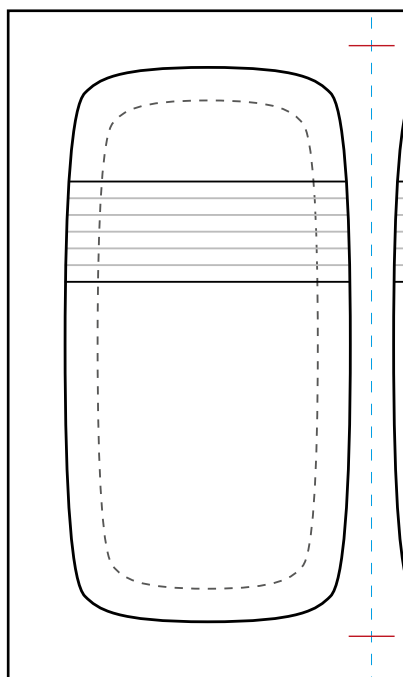
This PDF file will print on standard letter sized paper on any desktop printer (inkjet or laser) that is connected to your computer. These pattern pages must be printed at full-size (not reduced). That may seem obvious but the problem is Acrobat PDF Reader (the software on your computer) is automatically set to "Fit to Printable Area" and that setting will reduce the size of your patterns. It's very easy to fix this problem. When you ask the computer to print, a dialog box opens where you choose the printer, the page range, the number of copies, and the Page Scaling – you must change this from "Fit to Printable Area" to "None" - the pages will now print at full-size. Unfortunately the PDF Reader software will revert back to "Fit to Printable Area" and that means each time you want to print out full-size patterns you must remember to reset the Page Scaling to "None".

How to Create the Full-size Pattern

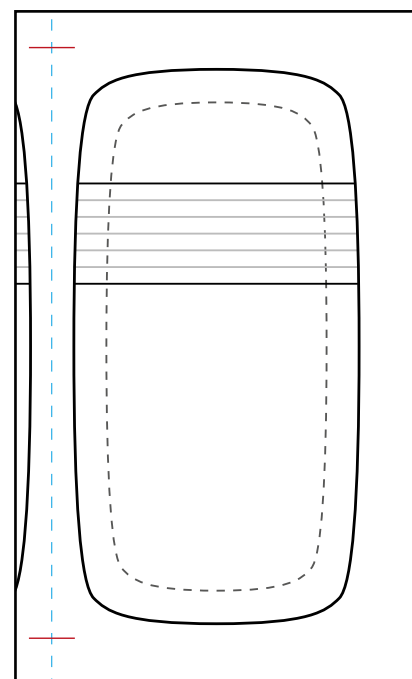
This full size pattern is 10" (25.5 cm) square a little too large to fit on a single page. Print 2 copies each of pages 2 & 3. Trim these pattern pages by cutting along the vertical blue dash lines using a craft knife and a straight edge (or scissors). Now align the solid red horizontal lines to register the 2 sides of this pattern, then tape the pattern pages together.



Two 'Such A Dish' plates fuse-fired and slumped in the kiln in a single firing, at the same time



This is left side of the full-size pattern on page 2 of this pattern packet

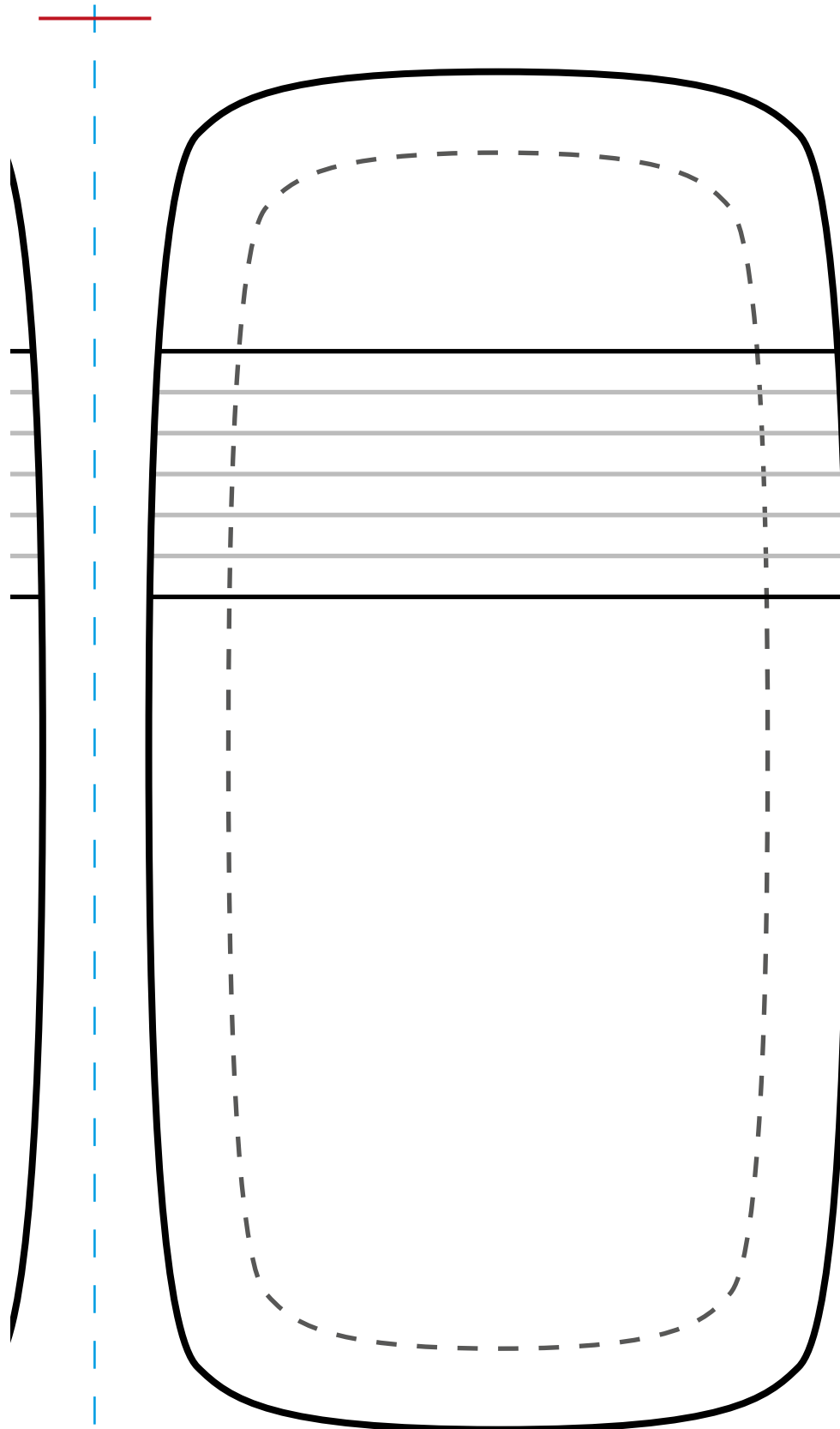


This is right side of the full-size pattern on page 2 of this pattern packet

Use one of these full sized patterns to trace and cut your glass components and use the other pattern to cut-out the fiber paper mold (using the dashed oval lines). You will find complete instructions to create these beautiful plates on pages 62 and 63 in the book *Joy of Fusing*.

The Right side of the full-size pattern

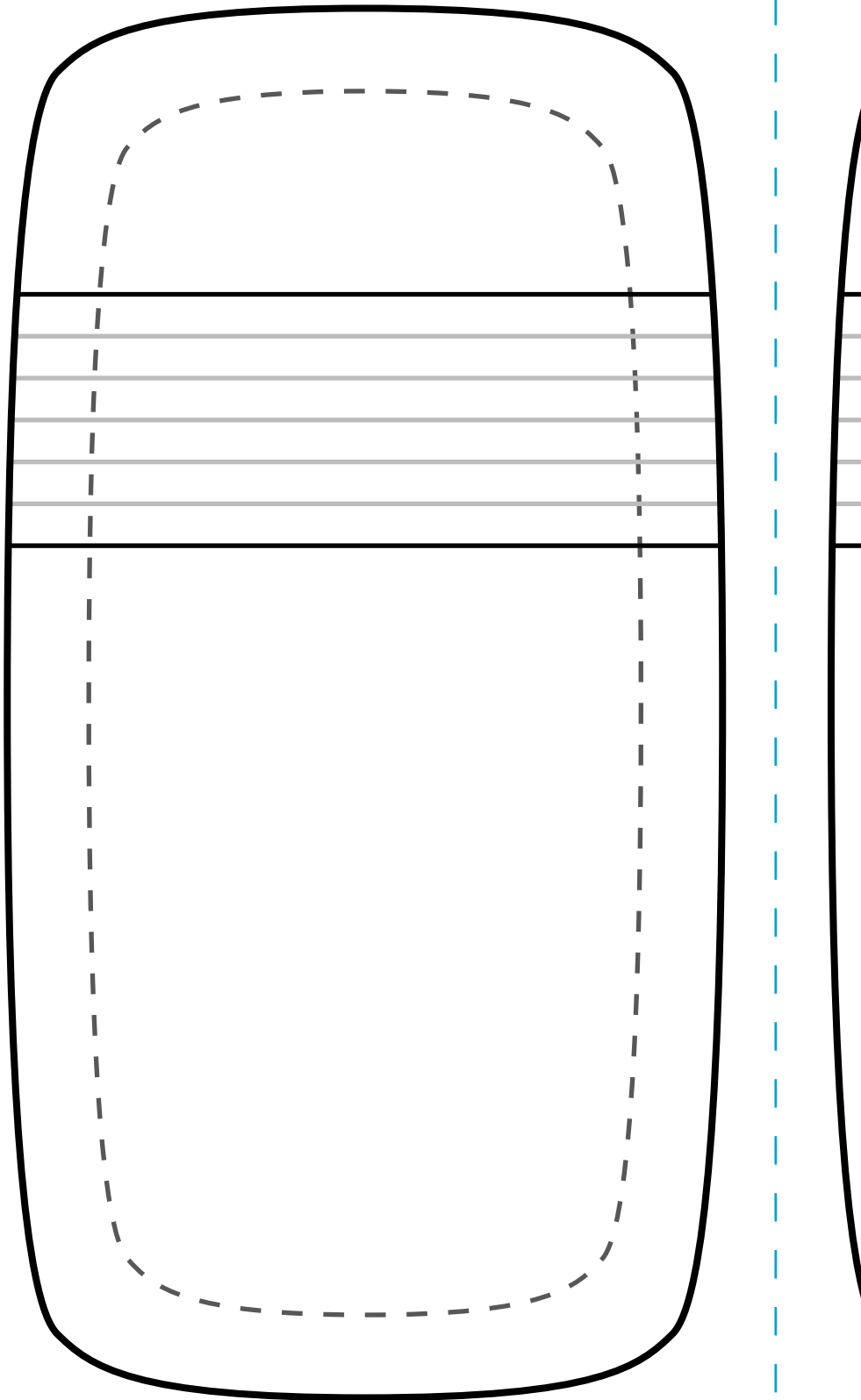
Trim this pattern along this blue dash line using scissors or a craft knife and a straight edge.



Align these solid red horizontal lines to register (match) then tape the two sides of this pattern after they have been trimmed.

The Left side of the full-size pattern

Trim this pattern along this blue dash line using scissors or a craft knife and a straight edge.



Align these solid red horizontal lines to register (match) then tape the two sides of this pattern after they have been trimmed.