

Contact: Randy Wardell - President

Phone: 954-607-2189

Email: thebuzz@joyoffusing.com

Website: www.joyoffusing.com

The Circle-Square Drop-Thru Mold

Create a Contemporary Footed Vase using this 3-Piece Drop-Thru Mold that Automatically Aligns the Glass Drop to the Center of a Wine-Glass Style Foot

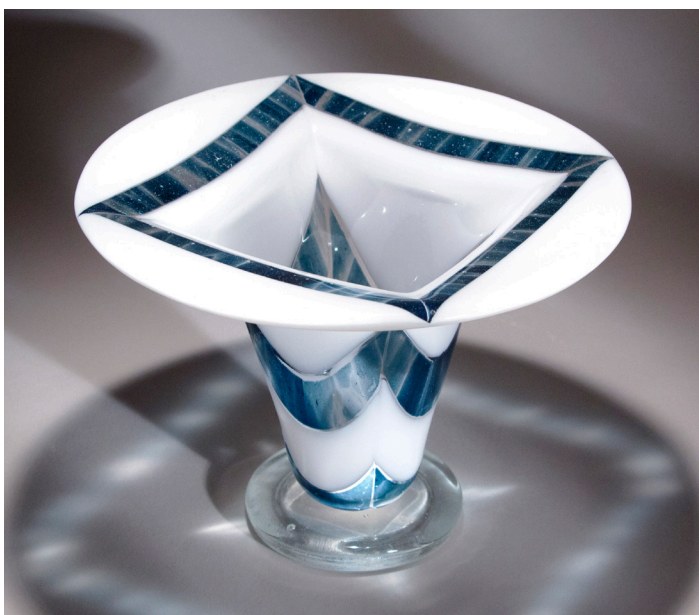


B310 Bundle Components

Now fusers can create a contemporary Drop-Thru footed vase using this 3-piece mold forming system. The process starts with a 2 layer circle design that Drops-Thru a square hole in the ring mold then the glass drop is automatically aligned to hit and fuse to the center of a pre-cast glass foot disk. Turn the mold ring 1/3 of a revolution to change the height for 3 different vase dimensions: 5" (13cm), 4-3/8" (11cm) & 3-3/4" (9.5cm).

We are offering two distinct products:

- 1. The B310 Bundle** that includes 3 ceramic molds: the NEW Circle-Square Drop-Thru Ring, the Foot Casting Mold, the Tripod Base plus a 4 page instructional booklet.
 - Suggested retail price \$139.95
- 2. The DT310 Circle-Square Ring** by itself, for fusers who already have the Drop-Thru foot mold and the tripod base.
 - Suggested retail price \$59.95



- Highest Position - Creates a vase 5" (13 cm) High
- Middle Position - Creates a vase 4 3/8" (11 cm) High
- Lowest Position - Creates a vase 3 3/4" (9.5 cm) High

In Stock and Available Now

Wardell Products P.O. Box 480069, Fort Lauderdale, FL 33348-0069

Email: thebuzz@joyoffusing.com • Ph: 954-607-2189 • Fax: 754-551-5462 • Website: www.joyoffusing.com